



'W' Wishbone Leg



## Specifications

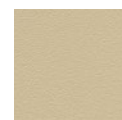
Diameter	1510mm
Height	740mm
Weight	27kgs
Depth	95mm
Seats	8 (600mm setting)

## Features

- MITY-EDGE™ lasts 3 times longer than leading competitors.
- Patented durable construction cuts replacement & repair costs.
- Lightweight design prevents staff injuries and claims.
- High impact ABS polymer shell finish.
- ABS injection moulded corner reinforcements can withstand a 600mm vertical drop.
- Easy to use folding leg design for quick setups and breakdowns.
- Supports a uniformly distributed load of over 900kgs, reducing public liability and OH&S issues.
- Patented heat-shield enables table surface to withstand direct contact with hot objects up to 71°C.
- Utilises recycled materials in construction.
- Full 15 year Mity-Lite warranty.

## Options

- Grey, beige, black or brown textured tops as standard.
- Speckled beige, speckled grey and royal blue smooth tops also available.
- Broad range of carts, including flat, upright and edge stacking.



Beige



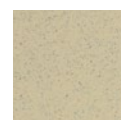
Brown Texture



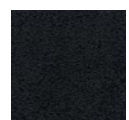
Grey



Speckled Gray



Speckled Beige



Black Texture

Is it any wonder over 3 MILLION Mity-Lite tables have been sold to hotels, resorts and event centres throughout the world?!



TOUGH LIGHTWEIGHT TABLES & CHAIRS

### Australia

Innova Group Pty Ltd.  
12-14 Décor Drive Hallam Vic 3803  
Free 1800 333 611  
Office +613 9709 3100

ABN 65 098 737 092  
Fax +613 9709 3150  
Em sales@innova-group.com.au  
www.innova-group.com.au

### New Zealand

Innova Group Pty Ltd.  
Private Bag 47908, Ponsonby 1001  
Auckland, New Zealand  
Free 0800 444 571

Fax +619 828 1599  
Em sales@innova-group.co.nz  
www.innova-group.co.nz